



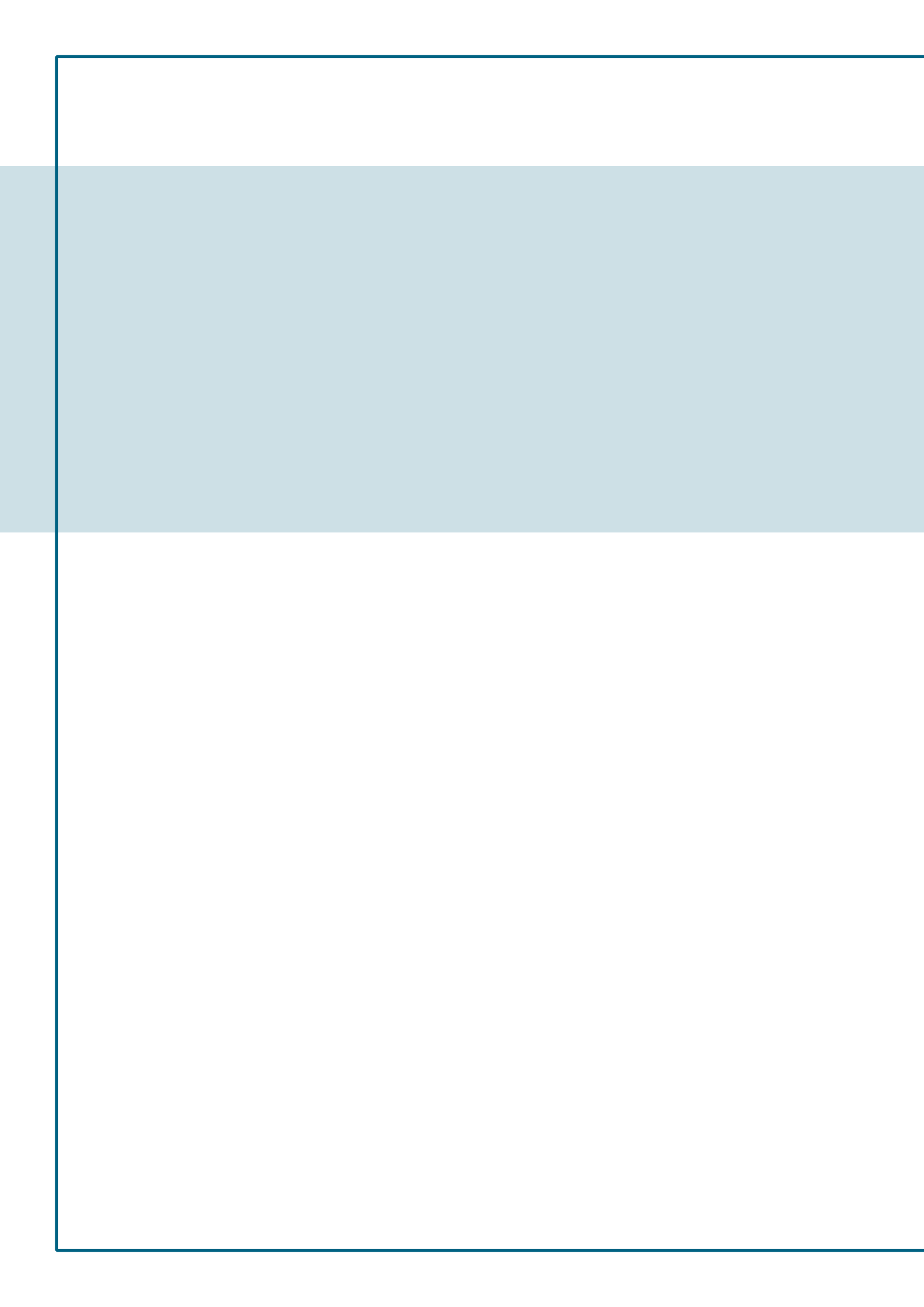
Smart City Hamburg

Project mySMARTLife Information Booklet

Hamburg, Germany



Bezirksamt
Bergedorf



CONTACT Media Inquiries

FREE AND HANSEATIC CITY OF HAMBURG BOROUGH OF BERGEDORF

Department Smart City und Innovation

Project Management mySMARTLife Hamburg

Stuhrohrstraße 10

21029 Hamburg

T: +49 40 42891 2433

M: mysmartlife@bergedorf.hamburg.de

mySMARTLife Partners in Hamburg:



Disclaimer

Layout & Graphic: konsalt GmbH

Cover Photo: Matthias Friedel

Text: mySMARTLife Partners



mySMARTLife in Hamburg

Hamburg is a smart lighthouse city! As part of the EU project mySMARTLife, with the partner cities of Nantes in France and Helsinki in Finland, Hamburg will develop and put into practice a variety of projects for an energy and resource efficient city by 2019. The main working fields are energy, mobility, digital communication and interaction with the citizens.

The mySMARTLife project is being funded with 19 million euros by the European Commission through its funding programme for Research and Innovation Horizon 2020. Approximately 5 million euros in funding is attributed to the partner network in Hamburg.

The project area is located in the centre of the Borough of Bergedorf, where the development of the new attractive residential areas along the "Schleusengraben" (an old industrial channel) takes place, is already one of the most important urban development areas in Hamburg. The mySMARTLife partner network brings together various institutions from administration, science and research as well as local and international companies and is already active in Hamburg within various fields.

Background

European cities are facing great challenges. Booming cities, after effects of climate change and the need for emission reduction require adapted strategies in the planning and skilful use of digital solutions for urban coexistence. Consequently, the fields of energy, mobility, production and consumption come to focus first.

In light of these challenges, the European Union aims to tackle them, en masse,

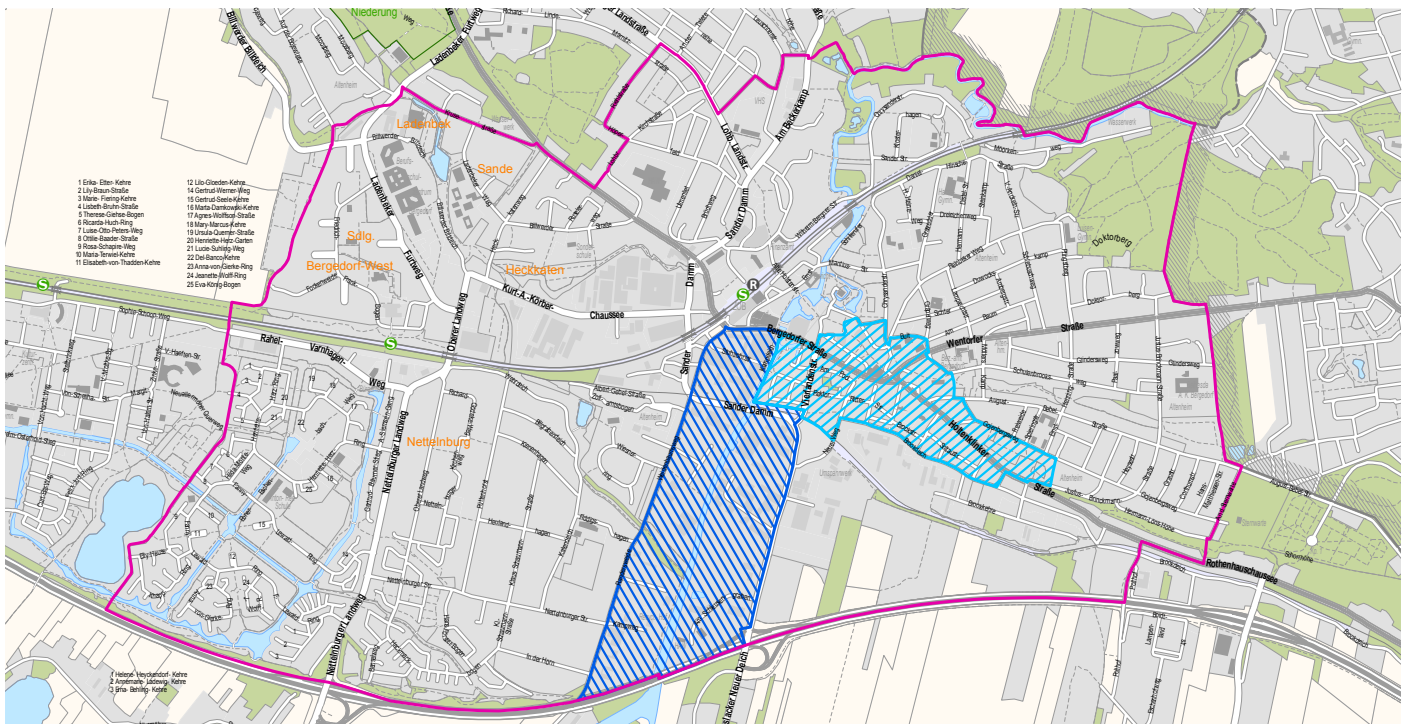
under the auspices of the Horizon 2020 funding programme. The EU has called upon European cities to become smarter, as well as to develop and implement appropriate solutions in selected quarters.

Since the start of the project in 2016, Hamburg is now working side by side with Helsinki and Nantes on the implementation of their smart city ideas.

Project Area and mySMARTLife Partners

In Hamburg, the project will be carried out in the Borough of Bergedorf and therefore the municipality is responsible for the German part of the project. The Hamburg project application is endorsed by a project group of 12 partners, including Deutsche Telekom and Volkswagen as international corporations, Energienetz Hamburg and konsalt as local companies, as well as Stromnetz Hamburg and Verkehrsbetriebe Hamburg-Holstein as public companies. In addition to the Borough of

Bergedorf, the city partners also includes the Senate Chancellery, the State Office for Roads, Bridges and Waters, and the Agency for Geodata and Surveying. The University of Applied Sciences (HAW) and the HafenCity University (HCU) represent the scientific and academic research segment. Within mySMART-Life project, these diverse partners of different specialisations work together to develop solutions for a smart, interconnected and digital city.



mySMARTLife project actions are divided into the four topics: energy and infrastructure, mobility, digital communication and interaction with the citizens. These main working fields demonstrate how transformation to a “smart city“ can be achieved. Sustainable concepts and strategies are being developed at “Schleusengraben” and “Bergedorf-Süd”, the focus neighborhoods in the project.

These concepts and strategies are aiming to provide citizens with innovative solutions in everyday life. After being successfully tested in the Lighthouse cities of Hamburg, Helsinki and Nantes, actions will be transferred and further developed in the follower cities of Bydgoszcz (Poland), Rijeka (Croatia) and Palencia (Spain).

Energy and Infrastructure

The supply of cities with constantly available energy is a basis for modern urban life. The traditional energy production (nuclear power, coal or gas) is burdened with strong environmental impacts. A development towards renewable energy is therefore of crucial importance. The new residential and commercial areas along the Schleusengraben are to be built according to the latest energy efficiency standards and with primarily use of renewable energy sources. In the neighbourhood of Bergedorf-Süd, the retrofitting area, the energy-efficient refurbishment of buildings is mainly focusing on the preservation of monuments and the

participation of local real estate owners. In addition to facade renovation and insulation, local combined heat and power plants are planned, which can also be used as “heat islands“ for the surrounding buildings. By installing new intelligent electricity, gas and water meters (“multimetering“) and modern control technologies (“smart home solutions“), the energy consumption in the project area is checked, efficiently controlled and thus optimised.



Communication and ICT

The Free and Hanseatic City of Hamburg already operates an IT platform for the management of urban geodata, which is made available for free. In the future, real-time data, for example, from energy systems in the project area of the Schleusengraben will also be recorded on a so-called Urban Platform after consulting with the owners on site. In addition, exist-

ing data from the areas of energy, mobility and digital infrastructure of the city of Hamburg will be integrated. Thus, the new digital urban platform is to become an important anchor point of the smart city of the future.

Mobility

One of the biggest causes of climate change in cities is the transport sector, in particular the stagnant inner-city car traffic. The mySMARTLife project has set itself the goal of reducing these emissions through an exemplary expansion of electromobility. For this purpose, the public fleet in Bergedorf will initially be converted to electric vehicles. The additional provision of electric bicycles will reduce the number of cars

and thus their CO2 balance. The local bus company is also investing in a climate-friendly future. With the new acquisition of electric buses, regular services will gradually be converted to electrical vehicles. In addition, car-sharing offers will be established in Bergedorf and new charging stations for electric cars will be installed in the project area. Thus, the citizens of Bergedorf are offered comfortable mobility. In the meantime, the negative effects of outdated mobility against climate and people will be reduced.



Interaction

An important aspect is the interaction with the citizens of Bergedorf. The Hamburg research institute konsalt and the HafenCity University are responsible for this task. In each of the four subject areas of the project, the public has the opportunity to interact and participate. This allows mySMARTLife to further develop the city in dialogue with the public. In the course of the project,

the public will be asked about their ideas and suggestions by means of various interaction offers and actively involved in the projects, for example via the mSL-Talks event series, online questionnaires for parcel deliveries or regular stakeholder meetings of the Bergedorf Innovation Network.

mySMARTLife Partner



City of Hamburg, Borough of Bergedorf

Profile

The Borough of Bergedorf is located in the southeastern city area of Hamburg. It is the largest borough in comparison to other boroughs of the city, but has the fewest population density with about 120,000 inhabitants. The spatial structure of the district is characterised by a condensed historical centre and the extensive agricultural areas of the so-called “Vier- und Marschlande”. In recent years, several companies and research institutes in the fields of renewable energies, logistics and life sciences have settled in the area of the Schleusengraben. There is also a lot of potential for housing development. At the same time, the Borough of Bergedorf was the first in Hamburg to set up its own climate protection concept in 2016 in order to ensure the sustainable development of the city structure.

Activities in mySMARTLife

The Borough of Bergedorf supports and coordinates the smart actions of the various project partners on site. It also organises the urban development of the areas along the Schleusengraben neighbourhood and the sustainable development of existing urban areas for the challenges of the future.



Contact:

Christoph Lindemann
 M: Christoph.lindemann@bergedorf.hamburg.de
 T: +49 40 42891 2433



Tasks and Goals

- The Borough of Bergedorf wants to increase the quality of life for the citizens with sustainable urban development.
- The aim is to reduce CO2 emissions by reducing environmentally harmful transport and by promoting renewable energy and energy-efficient buildings.
- The Borough of Bergedorf tries to meet the demands of the citizens for a modern and innovative administration.
- The Borough of Bergedorf represents the city of Hamburg on the subject of smart city in exchange with other cities.



Senate Chancellery Hamburg

Profile

The Senate Chancellery is the centre of political action in the Free and Hanseatic City of Hamburg and implements political and parliamentary goals in administration. It is in permanent direct contact with all authorities, offices and state-owned enterprises, reports their demands to the First Mayor and ensures political exchange, as well as in responsibility of the existing structural, personnel and material arrangement enable the Senate Chancellery to play the role of a driving force in the political development of the city. Many years of trusting cooperation between politics and administration open up the opportunity to develop new and existing political protocol and to strengthen administrative influence, instruments and developments.



Tasks and Goals

- Political implementation of the project at national and international level
- Promotion and active participation of political decisionmakers
- Permanently improve smart city and urban development mechanisms and commitments

Contact:

Thomas Jacob
 M: Thomas.jacob@sk.hamburg.de
 T: +49 40 24 831 2656

mSL-Project Group:

Interaction



Activities in mySMARTLife

In the mySMARTLife project, the Senate Chancellery plays a key role in the political implementation of the project. It brings Hamburg experience into the European mySMART-Life consortium and transfers interchangeable knowledge of the project partners directly to the Hamburg administration. In addition, the Senate Chancellery uses its political international connections, in particular the Hanse Office in Brussels to place the project not only nationally but also internationally.



ENERGIENETZ Hamburg eG

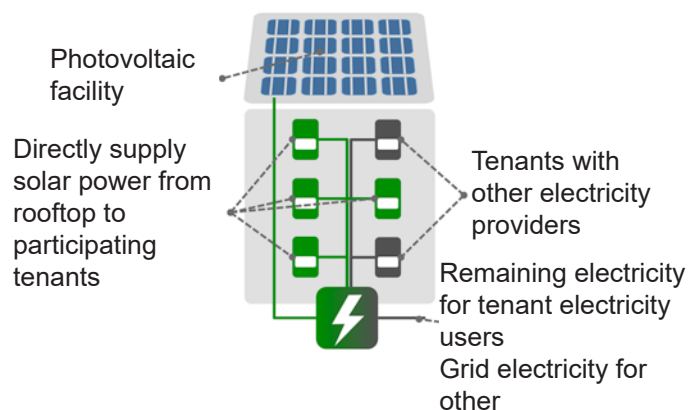
Profile

EnergieNetz Hamburg eG (ENH) is an energy cooperative for the metropolitan region of Hamburg. As an association of committed citizens, it stands for citizen participation and responsibility in the Hamburg energy transition. ENH promotes the consistent expansion of a renewable energy system in the metropolitan region and relies on a climate-friendly and socially acceptable economy. ENH is committed to ensuring that the added value from electricity and heat generation remains stronger in the future of the region. ENH is involved in the Hamburg energy policy and cooperates with actors from the metropolitan region who support the energy transition.

Activities in mySMARTLife

As part of mySMARTLife, ENH is developing an innovative energy supply concept in the Bergedorf-Schleusenengraben development area. The areas of electricity and heat supply are treated holistically and combined with efficient storage solutions through the overall architecture. ENH acts both in the role of consultant and plant operator.

“Tenant electricity“



Contact:

Matthias Ederhof
M: m.ederhof@energienetz-hamburg.de

Doris Willmer
M: d.willmer@energienetz-hamburg.de
T: +49 176 747 890 57

mSL-Project Group: Energy and Infrastructure



Tasks and Goals

- Increase the use of renewable energies
- Implementation of the law introduced in 2017 to supply tenants and residents of condominiums with “solar power“ from the roof of a multi-party house (“Tenant Electricity Act“ / “Mieterstrom-Gesetz“)
- Introduction and efficient operation of local energy networks for the simultaneous supply of heat and electricity in the Borough of Bergedorf
- Coupling of district heating networks and tenant electricity solutions
- Implementation of storage solutions for electricity and heat to increase self-sufficiency
- Planning of large open space plants for solar energy production on otherwise unusable brownfields, such as noise barriers
- Pilot installations of photovoltaic foils on facades and roof surfaces with low load capacity

HAW Hamburg | Competence Center for Renewable Energy and Energy Efficiency

Profile

The Competence Center for Renewable Energy and Energy Efficiency (CC4E) bundles all activities in the fields of renewable energies and energy efficiency at the Hamburg University of Applied Sciences with a focus on wind energy, system integration and storage. In February 2015, the CC4E Technology Center Energy Campus Hamburg opened in Bergedorf. It has a wind laboratory to develop and test new technologies to increase the life and performance of wind energy. Part of the wind lab is the own Windfarm Hamburg Curslack. In the Smart Grid laboratory, efficient and intelligent solutions are developed in the interplay of energy generation, consumption and storage. The Technology Center Energy Campus was funded by the Senate of the Free and Hanseatic City of Hamburg and received around € 3.8 million and the European Regional Development Fund (ERDF) € 3.5 million for its research.



Photo: CC4E

Tasks and Goals

- Simulation of energy production and consumption
- Coupling of electricity, heat and e-mobility
- Knowledge entry through the operation of innovative systems engineering in the Energy Campus
- Contribution to the development of a high share of renewable energies in Bergedorf

Contact:

Prof. Dr.-Ing. Hans Schäfers
M: hans.schaefers@haw-hamburg.de
T: +49 40 428 12 5895

Dipl.-Ing. Petrit Vuthi
M: Petrit.vuthi@haw-hamburg.de
T: +49 40 428 75 9130

mSL-Project Group: Energy and Infrastructure



Photo: Jörg Böhling

Activities in mySMARTLife

Within the project mySMARTLife the HAW Hamburg is responsible for the energetic simulations in the Borough of Bergedorf with the working group Center for Demand Side Integration (C4DSI). The focus is on cross-sector simulations between electricity, heating/cooling and e-mobility. The goal is to increase the proportion of electricity from renewable energies in the Borough of Bergedorf. In particular, the electricity demand should be matched to the electricity supply (from renewable energy sources).



Photo: CC4E



Europäische Union
Europäischer Fonds für regionale Entwicklung
Investition in Ihre Zukunft

HafenCity University Hamburg

Profile

The HafenCity University Hamburg (HCU) is involved in mySMARTLife as a scientific research partner. With its expertise in areas of sustainable urban development and planning communication, the HCU investigates which actors and institutions are involved in digital urban development and citizen participation in the fields of energy efficiency and sustainable mobility. The aim is to develop suitable procedures and tools that can support sustainable digital urban development.



Tasks and Goals

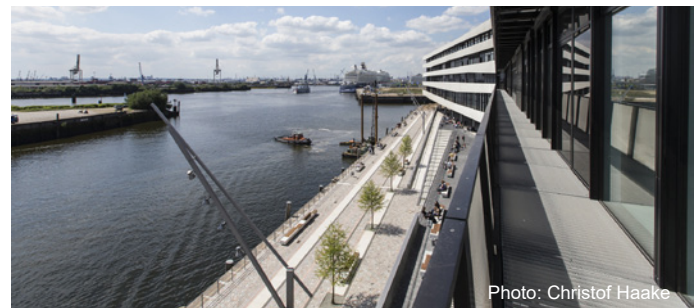
- Analysis and evaluation of the actors and institutions involved in digital urban development in Hamburg
- Analysis and evaluation of the participatory processes in the context of mySMARTLife in Hamburg as well as the social acceptance of Smart City solutions in the district
- Develop appropriate procedures and tools to support sustainable and digital urban development



mSL-Project Group: Interaction



Communication and ICT



Activities in mySMARTLife

As a research partner in the mySMARTLife project, the HCU examines governance structures in the area of smart city development in Hamburg. For this purpose, the local institutional framework conditions and related instruments as well as actors involved are analysed. Of particular interest is what the influence of existing structures have on the development and implementation of smart city structures and what role institutional and organisational factors play in this influence.

On the other hand, the HCU deals with the analysis and evaluation of citizen participation processes in mySMARTLife Hamburg. These relate to the various events and formats for participation and information that will be implemented as part of mySMARTLife. The evaluation of participatory processes and their respective instruments focuses on the extent to which they promote social inclusion and offer various groups of the population opportunities to participate in decision-making processes. Another field HCU deals with in the project is the social acceptance of mySMARTLife. Based on the analysis results of the public participation processes, the influence of these on the social acceptance of smart city solutions in the district is examined and social acceptance can be increased.

Contact:

Prof. Dr. Jörg Knieling
M: Joerg.knieling@hcu-hamburg.de
T: +49 40 42827 4515

Katharina Lange
M: katharina.lange@hcu-hamburg.de
T: +49 40 42827 4528

konsalt GmbH

Profile

The konsalt Company for City and Regional Analysis and Project Development mbH (konsalt GmbH) with seat in Hamburg is working, since its establishment at the end of the 1980s, in urban fields such as architecture competitions and procedural support, participation procedures, local resident communication, analysis and research. konsalt embodies an interface between public administration, investors, politics and citizens.

Activities in mySMARTLife

In Bergedorf-Süd, various interaction tools (digital and analog) are used, which fulfil different requirements depending on the target group. The aim is to advise local proprietors and to show them the potential of energetic refurbishment. Here, the experiences and the knowledge of the energetic refurbishment management Bergedorf-Süd (2014-2017) are applied. Together, new ideas and solutions can be developed. At the same time, both the partners of the mySMARTLife consortium and the stakeholders involved benefit from a constant knowledge-based exchange for the development of a digital and smart city. In the same way, konsalt GmbH takes over parts of the public relations work in close coordination with the administrative office in the Borough of Bergedorf and is leader in the project group “Non-Technical Actions“.



Photo: Bente Stachowske

Contact:

Margit Bonacker
M: bonacker@konsalt.de
Kristian Dahlgaard
M: dahlgaard@konsalt.de
Klaas Wulff
M: wulff@konsalt.de
T: +49 40 35 75 27 0

mSL-Project Group:

Interaction



Energy and Infrastructure



Photo: konsalt

Tasks and Goals

- Continuation and further development of projects from the project “Energetic Refurbishment Management Bergedorf-Süd“ (<http://konsalt.de/projekte/>)
- Proprietor and citizen activation in the project area
- Conception and organisation of mySMARTLife-Talks and mySMARTLife Walks in close coordination with the Borough of Bergedorf
- Conception and organisation of the innovation network meeting Bergedorf in close coordination with the Borough of Bergedorf
- Public relations in coordination with the project partners (including the design and production of flyers, Press texts, etc.)



Photo: konsalt GmbH

Agency for Geoinformation and Surveying

Profile

When it comes to geodata and digitisation, the Agency for Geoinformation and Surveying (LGV) in Hamburg is the first address. As an innovative and reliable service provider, the LGV supports numerous projects from industry, science and administration - including the Free and Hanseatic City of Hamburg on its way to becoming a digital city. Due to its geo-technical expertise, the LGV is also a cooperation partner in several EU projects, such as mySMARTLife.

Activities in mySMARTLife

Locked data silos, i.e. non-networked, decentralised data storage, as well as stand-alone applications and inflexible IT structures will soon be a thing of the past in Hamburg. In the city of the future, IT systems, IT services and sensors will be interconnected in order to make the interaction of Hamburg's citizens, the economy, science and public administration or their service providers smarter. Citizens will be able to access more and more information about current situations in their district in real time, such as: the traffic situation or the availability of parking spaces. Therefore, it is necessary to operate a technical platform as a central data hub - the Hamburg Urban Platform. It must be able to collect and link together large amounts of urban data from a wide range of areas, bundle the subject accordingly and provide it flexibly. The evaluation of this data is the basis for innovative and knowledge-based decisions and the key to intelligent city management of the Free and Hanseatic City of Hamburg. The LGV is a competent contact partner for the Hamburg Urban Platform. It is responsible for the operation, development and provision of the data.



mSL-Project Group:

Communication and ICT



Tasks and Goals

- Head of the mSL project group: Communication & ICT
- Provision and development of the Hamburg Urban Platform (HH-UP)
- Evaluation and implementation of interfaces for real-time geodata in the HH-UP
- Integration of real-time geodata in the HH-UP from the fields of energy, mobility and infrastructure for the project area in the Borough of Bergedorf
- Providing real-time geodata as open data via standardised, open interfaces
- Networking of digital data for the calculation of the indicators chosen in the project
- Providing city 3D data for model calculations in the field of energy
- Development of monitoring processes and data analysis for decision support
- Support of participation processes by map-based online applications

Contact:

Sebastian Schmitz
M: smartcity-projekte@gv.hamburg.de



State Office for Roads, Bridges and Waters

Profile

The State Office for Roads, Bridges and Waters (LSBG) is part of the Hamburg administration and assigned to the Department of Economic Affairs, Transport and Innovation. The LSBG is available to the City of Hamburg as a service provider for the realization of construction projects, for the maintenance and realisation of the technical infrastructure, as well as the operation of traffic, water and flood protection systems with the associated technical structures.

mSL-Project Group:

Energy and Infrastructure



Activities in mySMARTLife

As part of mySMARTLife, the LSBG is working on the two subprojects "Humble Lamppost" and "Smart Street Lighting". The aim is to provide additional services to citizens through the public lighting infrastructure.

The "Humble Lamppost" or the integrated multifunctional street lamp is characterised by the interplay of light, communication, sensors and various other functionalities. As a result, street lighting becomes an integrated urban infrastructure that provides citizens with additional services (such as WiFi). To illustrate, the lighting of the planned cycle path along the Schleusengraben will be equipped with communication components and sensors to realise adaptive lighting and free Wi-Fi.

In contrast to the "Humble Lamppost", the subproject "Smart Street Lighting" accounts the integration of additional services for citizens and citizens in the existing lighting infrastructure. This is due to the structural and technical constraints in the inventory a much greater challenge.

Photo: LSBG



Tasks and Goals

- Planning and realisation of an integrated multi-functional street lighting (Humble Lamppost) and others in the Schilfpark and along the new cycle path at the Schleusengraben
- Planning and realisation of intelligent street lighting (Smart Street Lighting) in the project area Bergedorf-Süd

Contact:

Henning David
M: Henning.david1@lsbg.hamburg.de
T: +49 40 428 26 2314

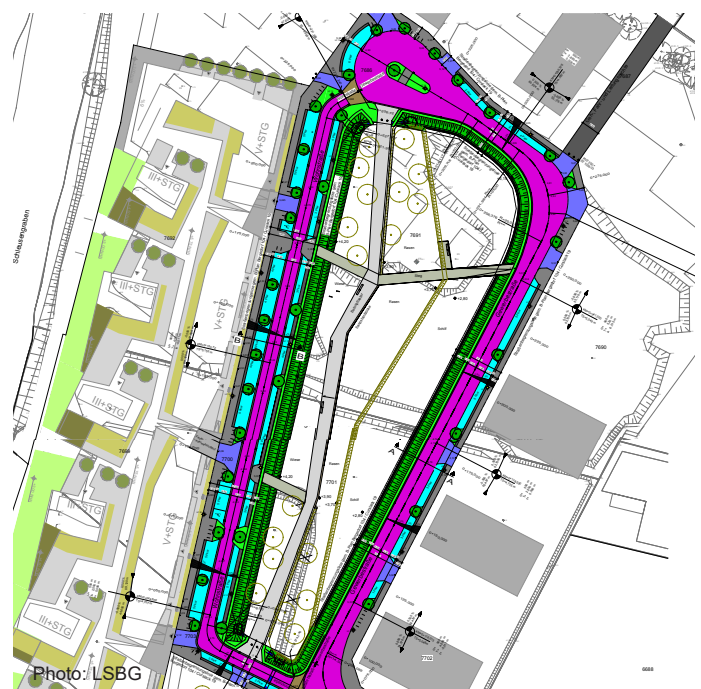


Photo: LSBG

Stromnetz Hamburg GmbH

Profile

Stromnetz Hamburg GmbH (SNH) is responsible for the operation, design and development of the power distribution network. Hamburg is a growing city - with vision and innovation, we ensure that the distribution network remains efficient and always well prepared for the needs of our customers.

Activities in mySMARTLife

SNH takes on the role of a so-called “linked third party“ in the mySMARTLife project and actively contributes know-how in the areas of electromobility and smart and multi-metering. SNH is a competent partner for all aspects of charging infrastructure for electric mobility. It provides services, performance and access to its IT backend. More than 1.1 million electricity meters in Hamburg record electricity consumption. The owner and operator of the meters is SNH. Today’s meter technology is developing through new requirements for intelligent metering systems. SNH is prepared for the future market of smart metering, but also for multi-metering: this enables the convenient remote reading of all consumption values for electricity, water, heat and gas and a daily visualisation of the data for the users.



Photo: SNH

Contact:

Dr. Sarah Jamil
 M: sarah.jamil@stromnetz-hamburg.de
 T: +49 40 492028630

mSL-Project Group: Mobility Energy and Infrastructure



Photo: Jörg Müller

Tasks and Goals

- Implementation of modern measuring equipment, partly with the option of an in-house visualisation
- Implementation of intelligent measuring systems as well as multi-metering for online visualisation of electricity, water and heat consumption
- Support in the construction of fast charging infrastructure in Bergedorf
- Developing the charging infrastructure for various forms of car-sharing concepts
- Support in the implementation of intelligent charging technology, in the form of intelligent load management
- In order to avoid incorrect use of charging stations, SNH will implement a technical solution that records such an occupancy of the parking spaces within one charging station in the project region.

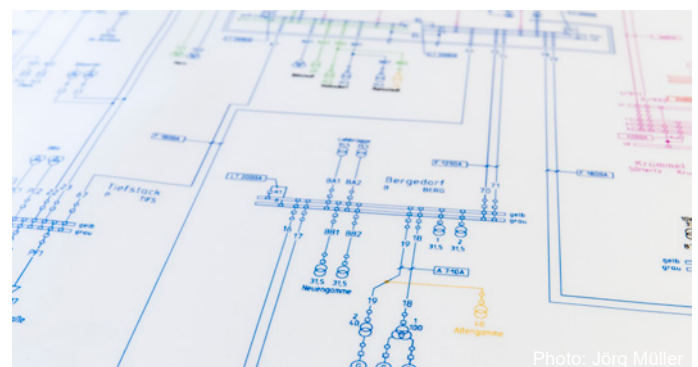


Photo: Jörg Müller



Deutsche Telekom AG

Profile

With approximately 168 million mobile customers, 28 million fixed-network lines, as well as 19 million broadband lines, Deutsche Telekom is one of the leading integrated telecommunications companies worldwide (as of 31.12.2017). Telekom offers products and services in the areas of landline, mobile communications, Internet and IPTV for private customers as well as ICT solutions for large and corporate customers. Deutsche Telekom is represented in around 50 countries and employs around 216,000 people worldwide. To ensure that Deutsche Telekom continues to be successful, the Group is evolving from a classic telephone company into an entirely new kind of service company. The core business, i.e. the operation and sale of networks and connections, remains the basis. But at the same time, Deutsche Telekom is actively involved in business areas in which new growth opportunities are flourishing.

www.telekom.com

Activities in mySMARTLife

Through its work in the field of open urban platforms, Deutsche Telekom supports the interoperability of today's standalone solutions in the energy and mobility sectors. A relevant example can be found in the field of intelligent energy control. Here, the sustainable use of renewable energies (wind or solar energy) is set to have priority in the project area. In order to compensate for fluctuations in energy production, concepts for intelligent energy distribution are being created and evaluated. Another focus is the work on intermodal mobility concepts through the collection and analysis of data from different mobility providers.



Contact:

Joachim Schonowski
M: joachim.schonowski@telekom.de
T: +49 30 8353 58554

mSL-Project Group:

Mobility



Communication and ICT

Energy and Infrastructure



Photo: Telekom

Tasks and Goals

- Intelligent energy distribution: Design and evaluation of district-based energy and flexibility management taking into account the coupling of the two energy sectors electricity and heat
- Development of an open urban platform in accordance with DIN Specification 91357 to facilitate cross-connections between smart city areas, such as energy and mobility
- Intermodal Mobility Concepts: Deutsche Telekom is working with partners to enable route proposals in real time through the combination of different modes of transport, with special emphasis on electromobility. The aim here is to reduce congestion and make life in the city more livable for citizens



Photo: Telekom



Verkehrsbetriebe Hamburg-Holstein GmbH

Profile

Verkehrsbetriebe Hamburg-Holstein GmbH (VHH) is the second largest public transport company in Northern Germany with around 1,600 employees at a total of twelve locations. There are a total of 527 buses on 154 lines in Hamburg and its surrounding area. The majority of the VHH fleet still drives with diesel or hybrid drive. But that should change soon: The VHH has the goal of procuring exclusively electric buses for the Hamburg area from 2020 onwards. From 2030, the conversion to electromobility shall be completed in Hamburg.

E-Buses for mySMARTLife

The use of electrically driven buses helps to avoid environmentally harmful CO2 emissions. VHH will procure 10 electric buses for the Borough of Bergedorf in the mySMARTLife project. That's why one of the first electric bus workshops in northern Germany is being built here. Already in the summer of 2018, it is put into operation. VHH is investing around € 10 million in the modern workshop in Bergedorf, which is specially designed for maintenance and repair of electric buses. At the same time, the existing processes at the warehouse will be adapted and the employees of VHH will also be trained fit for e-mobility. Because e-mobility is so important not only for the VHH, but also for all of Hamburg, it has also developed its own product brand: "elexity - Hamburg drives electrically".



Photo: Wolfgang Köhler

Contact:

Nina Zeun
M: nina.zeun@vhhbus.de
T: +49 40 725 94679

mSL-Projektgruppe:

Mobilität



elexity

Hamburg fährt elektrisch



Photo: VHH

Infrastructure

The electric buses in Bergedorf require a modern charging infrastructure, as well as a smart charging management. The VHH enters new territory at this point and has set itself the goal of creating clear technical foundations and standards as quickly as possible. To power the e-buses, the company decided to use the overnight charge system. This system could also help solve problems of storing renewable energy. Electricity that could not be fed into the grid so far, finds an optimal application and can be used by VHH to operate the e-buses.



Photo: VHH

Volkswagen AG

Profile

We are redefining Mobility.

With its twelve brands, the Volkswagen Group is one of the world's leading automobile manufacturers and Europe's largest automobile manufacturer. With its future programme TOGETHER - Strategy 2025, the Volkswagen Group has paved the way for the biggest change process in its history: the transformation to a globally leading providers of sustainable mobility.

Cornerstones:

- Transformation of the core business
- Development of the Business Unit Mobility Solutions with a focus on urban space
- With "Roadmap E", the most comprehensive electrification initiative in the automotive industry has started: Group brands will bring 80 new electric vehicles to customers by 2025

With the goal of designing the mobility of the future, Volkswagen is developing smart integrated urban solutions for individual passenger transport as well as freight transport. In doing so, Volkswagen is also looking to cooperate with major partners in tomorrow's mobility world.

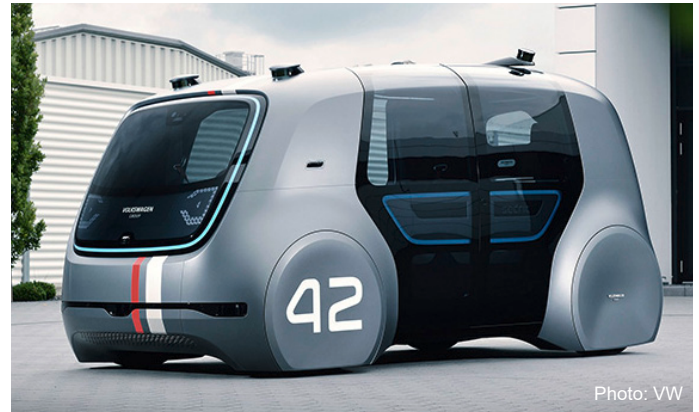


Tasks and Goals

- Implementation of a sharing concept with electric cars and e-bikes for the residents of the residential district in Hamburg-Bergedorf
- Electrification of the fleets of public authorities and companies based in Hamburg-Bergedorf
- Joint development and implementation of a sharing model with electric cars, e-bikes and Cityskaters with interested Bergedorf authorities in order to optimise fleet utilisation
- Sustainable improvement of the quality of life with regard to noise, air and traffic
- New mobility opportunities and improved mobility experiences for citizens of the city

mSL-Projektgruppe:

Mobilität



Activities in mySMARTLife

As part of the mySMARTLife project, Volkswagen implements innovative mobility concepts for residents, authorities and companies in Hamburg-Bergedorf. Therefore, the implementation of car sharing solutions for selected target groups is regarded as an important element. For example, in cooperation with a local housing association, a community car sharing scheme is planned which will enable the residents to access a joint and exclusive mobility offer. Likewise, Volkswagen supports the Bergedorf-based authorities and companies in the electrification of their fleets with electric cars, e-bikes and Cityskaters (see photo below).



Contact:

Heiko Perlick
M: Heiko.perlick@volkswagen.de
T: +49 5361 947137



This project has received funding from the European Union's Horizon 2020 research and innovation programme under grant agreement No 731297.